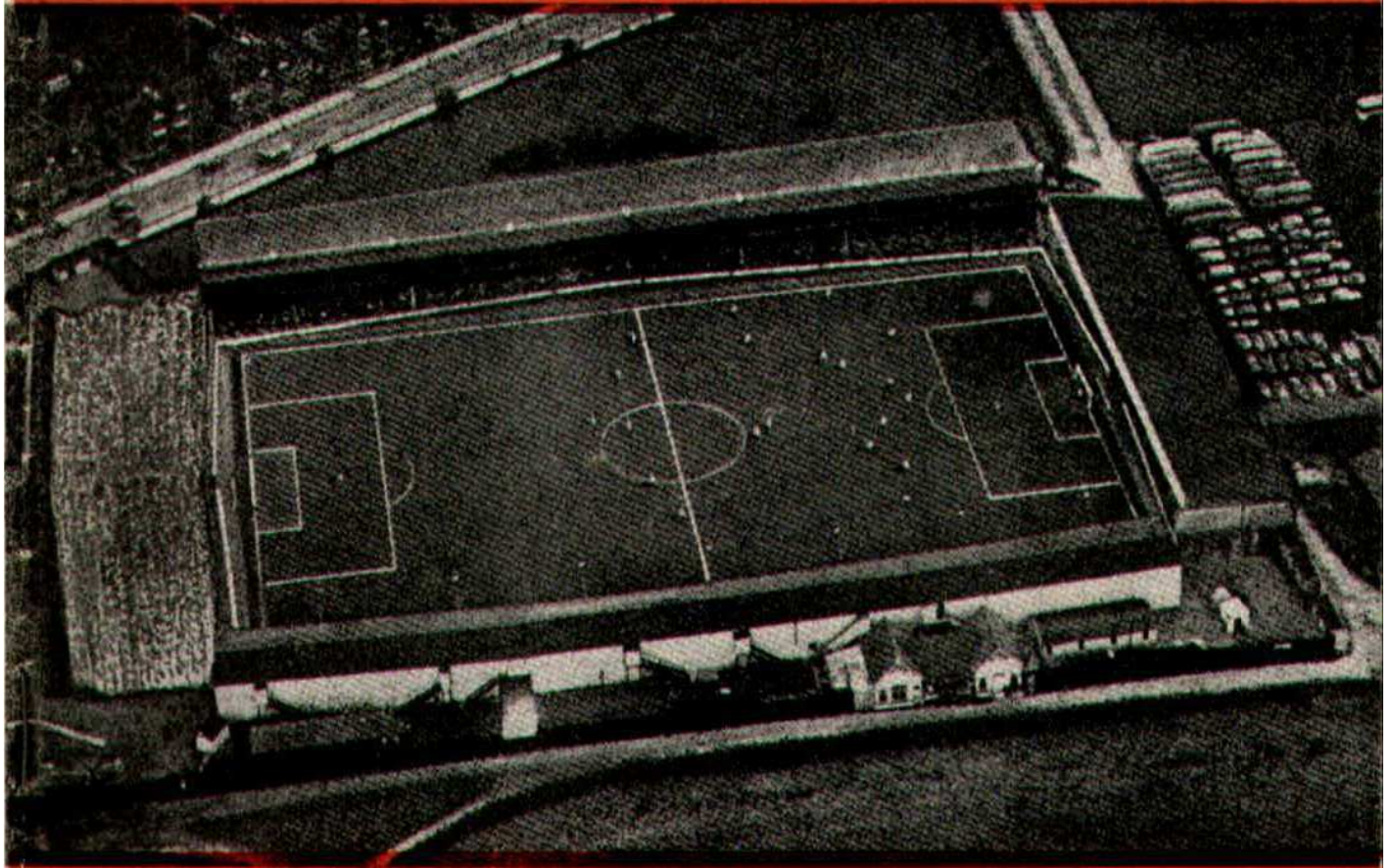




SWINDON TOWN FOOTBALL CLUB



SATURDAY, APRIL 8th, 1961

DIVISION III

SWINDON T. v. GRIMSBY T.

Kick-off 3 p.m.

Official Programme **4d.**

**SOUTHERN LAUNDRY
CO. LTD.**

Launderers and Dry Cleaners



TELEPHONE 4146
STATION RD., SWINDON

GO MODERN — GO ELECTRIC
for
TELEVISION, RADIO AND
DOMESTIC APPLIANCES

D. ROBSON

22 HAVELOCK STREET
6602 Swindon 6602

Make your Goal the

EAGLE HOTEL

(Prop.: Tom Hamilton)

WORTHINGTON :: GUINNESS
DEVENISH BEERS :: BASS
REGENT ST., SWINDON

LITTLE & CO. LTD.

The Name Linked with Service
and Value

*The Popular Ladies' and Men's
Complete Outfitters*



31-32 FLEET ST., SWINDON
Telephone 2831

NEXT MATCH . . .

WESSEX YOUTH LEAGUE

SWINDON T. v. PLYMOUTH A.

MONDAY NEXT, APRIL 10th, 1961

Kick-off 7.30 p.m.

Visit —

**THE
GRANADA CAFE**

60 CRICKLADE ROAD, SWINDON

Where good food
is served at a
reasonable price

LEESE, ING & Co. Ltd.

Incorporating BARKER & CO.

*Mineral Water and
Squash Manufacturers*



LANSDOWN RD., SWINDON
TELEPHONE 2744/2320

STADIUM SEATS

SEND FOR OUR ILLUSTRATED BROCHURE

We can manufacture to suit your requirements

**MARTYN LYNshaw LIMITED, BOUNDARY WORKS,
STRATTON ROAD, SWINDON**

SWINDON TOWN FOOTBALL COMPANY LIMITED

Registered Office: COUNTY GROUND, SWINDON.



President: H. V. SLADE, Esq., O.B.E., J.P.

Directors:

Mr. W. J. CASTLE (Chairman), Mr. H. E. LANE (Vice-Chairman).
Mr. B. T. HAMILTON (Hon. Treasurer), Messrs. C. CHANDLER, J. DAVIES,
R. FRICKER, C. J. GREEN, F. PLYER, H. WILLIAMS and K. H. WILMER.
Manager: B. J. HEAD. Secretary: R. A. MORSE.

VOL. 11

SATURDAY, APRIL 8th, 1961

No. 23

Club Notes

Determination, pluck, and fighting spirit; such is the "summing-up" regarding our lads after the match against second in the league table — Queen's Park Rangers.

After just fifteen minutes, Swindon were in difficulties with only ten men. How our team "chased and fought". What could we hope for? Only a desperate draw at the best. In the second half especially, we held our breath every time the Rangers attacked. We could see our lads' strength being sapped, by the extra work thrown on each one of them. Then suddenly, Bang! With a tremendous shot Swindon scored. How Mike Summerbee produced enough energy to unleash such a shot surprised everyone, and what a cheer! The loudest and longest heard at the

County Ground for a long time. Not only was it appreciation of the efforts of our lads, but also the release of those pent up feelings of tension and emotion. Were our boys pleased! How in the enthusiasm, and realisation of a great achievement the team absolutely mobbed the scorer. Much has been written about congratulations on the football field, sometimes by people who watch before a soulless T.V. screen; but here was the climax of real honest endeavour under great strain and duress by eleven very young men. Of course they were thrilled. Good luck to them, it was one of their greatest moments. To quote the words of one well known manager: "We wouldn't mind if it happened several times per match".

The crowd at the game numbered over 11,500, splendid support. We thank all our spectators,

BE A GOOD SPORT
SHOP AT
Ron's Pet Stores
RODBOURNE ROAD and
CRICKLADE ROAD

Poultry Foods - Fresh Dog Meat

**WATSON'S
CENTRAL NEWSAGENCY**
LTD.
Swindon's Leading Wholesaler
1 WELLINGTON STREET, SWINDON
Tel. 2049

M. J. REYNOLDS
GROCER
152/154 CRICKLADE ROAD
5479 SWINDON 5479
COOKED HAM OUR SPECIALITY

L. WOLLEN
WINES & SPIRITS
☛
373 Cricklade Rd., Swindon

CLUB NOTES—continued

not only for their continued support, but also encouragement. Our young players are under great strain; not only physically, but also mentally. They are the most concerned of any connected with the club at the results. They give everything, sometimes they try too hard (if that is possible). Please don't expect too much from them, help them, forgive them when they make mistakes. Encouragement such as that displayed on Easter Monday will

help tremendously. Swindon has five more home games. Maximum points from those games will ensure a position of safety in the league table.

To the players we say, "Good luck, lads; try to forget your position and play your normal game, relax, and ignore the tension, and all will be well."

Now is the time for everyone to pull together — supporters, team, officials, management— No grumbles, no moans. Onward Swindon to success and more success.

FOR ALL YOUR ANGLING NEEDS
CONSULT
FRANK WOODWARD
Swindon's Fishing Tackle Specialist
25 HAVELOCK ST., SWINDON
PHONE 3879

H. E. LANE
(REGENT STREET) LTD.
The Pork Sausage Specialists
117 Victoria Rd., Swindon
Telephone: 2336

ARE YOU GOOD ENOUGH
to join the
**DUKE of EDINBURGH'S
ROYAL REGIMENT?**

•
A fine career awaits you at
ARMY INFORMATION OFFICE,
18 Faringdon Road, Swindon

FIXTURES AND RESULTS TO DATE

DIVISION III

1960			
Aug. 20	Halifax Tn.	H	1-1
22	Tranmere R.	A	2-2
27	Shrewsbury	A	1-1
31	Tranmere R.	H	1-0
Sept. 3	Walsall	H	1-0
6	Bristol C.	A	1-1
10	Bury	A	0-3
17	Chesterfield	H	2-0
20	Watford	A	0-1
24	Southend U.	A	2-0
28	Watford	H	1-2
Oct. 1	Port Vale	H	6-0
5	Torquay U.	A	1-1
8	Notts C.	A	0-1
12	Shrewsbury (Cup)	H	1-1
15	Bournemouth	H	0-1
19	Bristol C.	H	3-1
22	Bradford C.	A	1-2
29	Barnsley	H	P
Nov. 5	Bath City (Cup) ...	H	2-2
10	Bath City (Cup) ...	A	6-4
12	Colchester U.	H	0-2
19	Grimsby T.	A	0-0 A
26	Shrewsbury (Cup)	H	0-1
Dec. 3	Reading	A	1-1
10	Coventry C.	H	1-2
17	Halifax T.	A	1-1
24	Brentford	A	1-2
31	Shrewsbury	H	2-2
1961			
Jan. 7	(3) Brentford	H	1-1
14	Walsall	A	0-3 A
21	Bury	H	4-0
28	(4) Newport C.	A	0-2
Feb. 4	Chesterfield	A	1-1
11	Southend U.	H	1-1
18	(5) Port Vale	A	1-4
25	Reading	H	1-1
Mar. 4	(6) Bournem'th ...	A	1-2
11	Bradford C.	H	4-0
18	(S.F.) Barnsley ...	A	1-2
21	Walsall	A	1-2
25	Newport C.	H	2-0
31	Q.P.R.	A	1-3
Apr. 1	Colchester U.	A	1-3
3	Q.P.R.	H	1-0
8	Grimsby T.	H
12	Hull City	H
15	Hull C.	A
19	Barnsley	H
22	Notts C.	H
26	Torquay U.	H
29	Coventry C.	A
May 6	(Final)

FOOTBALL COMBINATION

1960			
24	Aldershot	A	2-4
27	Shrewsbury T.	H	3-0
Sept. 3	Millwall	A	3-4
7	Fulham	A	1-1
10	Southend U.	H	1-2
13	Brentford	A	0-2
24	Brentford	H	0-1
27	Northampton	A	0-0
Oct. 1	8 Mansfield T.	H	4-2
15	Reading	A	0-1
22	Swansea T.	H	1-1
29	Plymouth A.	A	0-0
Nov. 5	Crystal P.	H	P
12	Colchester U.	A	1-2
19	Notts C.	H	P
26	Coventry C.	A	P
Dec. 3	Luton Tn.	H	P
10	Mansfield T.	A	1-2
17	Northampton	H	1-3
24	Bristol R.	H	1-1
26	Bristol R.	A	0-6
31	Shrewsbury T.	A	1-3
1961			
Jan. 7	Peterborough U.	A	1-3
14	Millwall	H	3-3
21	Southend U.	A	1-3
28	Peterborough U. ...	H	0-2 A
Feb. 4	Fulham	H	0-5
18	Aldershot	H	0-0
25	Swansea Tn.	A	0-4
Mar. 4	Plymouth A.	H	2-0
11	Crystal P.	A	0-1
18	Colchester U.	H	1-0
22	Coventry C.	A	2-0
25	Notts C.	A	0-1
31	Q.P.R.	H	2-0
Apr. 1	Coventry C.	H	0-2
3	Q.P.R.	A	2-2
8	Luton T.	A
13	Notts C.	H
15	Reading	H
20	Luton T.	H
22
29	Peterborough U.	H
May 1	Crystal P.	H

Our Visitors

GRIMSBY TOWN F.C.

It is our pleasure to welcome the Directors, Officials and Players of Grimsby Town F.C. to the County Ground for our game today. We have many happy memories of the Grimsby team's visits in the past, and perhaps one of the outstanding games was an F.A. Cup-tie when we won 2-1. Grimsby was a First Division club at that time. Our meeting at Swindon last season ended in a 3-2 win for us. Our goals were scored by Layne (2) and Woodruff.

Pen pictures of today's probable team:—

PEN PICTURES OF THE PLAYERS

MALCOLM WHITE (Goalkeeper)

Born in Sunderland, he joined Grimsby from Wolves. Height 6' 3½". Weight 12st.

DON DONOVAN (Right Back)

Joined Everton in 1949 as a 19-year-old after being spotted by Cliff Britten during Everton tour of Ireland. Born in Cork, he has been capped for Eire and can play at wing half or inside forward.

BRIAN KEEBLE (Left Back)

The discovery of 1959/60. Age 20, he came into the league side after only a few games in the Reserves—and kept his place to play in 34 games. Comes from Holbeach.

KEITH JOBLING (Centre Half)

Another product of Grimsby junior football, Jobling is team captain. He was signed as a wing half in 1953 but developed as centre half when he left the Forces. Missed only four matches last season.

DUNCAN WELBOURNE (Right Half)

Comes from neighbouring Scunthorpe, aged 20, a game, 'terrier type' player. Lost his place last Easter through injury to a shoulder.

MIKE CULLEN (Inside Right)

A hard worker, always looking for the ball. Formerly with Luton Town. Capped once — as a winger — for Scotland.

DEREK WILLIAMS (Outside right)

A Doncaster-born player, he was with Doncaster Rovers before joining Grimsby.

C. Dunn & Son

BUILDERS & DECORATORS
Alterations, Renovations, Conversions
Plumbers and Sanitary Engineers
503 CRICKLADE ROAD Tel. 2522

NOTTON'S CAFE

COUNTY ROAD

200 yards from Ground

RIGHT ON THE BALL

County Ground Hotel

(Adjoining Football Ground)
FULLY LICENSED
ARKELL'S ALES at THEIR BEST
Mine Host—Mr. Geo. Baillie

AT THE COUNTY GROUND TODAY—

WISES CATERING SERVICE

SWINDON'S LEADING OUTSIDE CATERERS
and for all your Special Events
55 GODDARD AVE. Phone 5562

OUR VISITORS—Continued

RON RAFFERTY (Centre Forward)

Another ex-Portsmouth player and one of Grimsby's best bargains. Got many goals, particularly with his head. Comes from Slough (Bucks) though he's a Geordie. Born in South Shields, but his parents moved south when he was young.

RALPH HUNT (Inside left)

Former Norwich and Bournemouth player, Grimsby signed him from Derby at the start of last season. The other prong in the double spearhead with Rafferty, Hunt got 33 goals in 39 league games last season.

RON COCKERILL (Left Half)

Former Huddersfield Town player, Ron had bad luck last season, most of which he spent on the injured list. Now fully recovered, he is ready to claim a first team spot again. Distinguished himself as a useful batsman in close season cricket in the Grimsby League.

JOHN SCOTT (Outside Left)

A talented player, formerly with Manchester United. Beginning his fourth season with Grimsby. Toured Canada with Irish F.A. in 1953. Played twice for Northern Ireland in World Cup series.

GODDARD & Co.

Wholesale and Retail

WINE, SPIRIT, BEER
AND CIDER MERCHANTS



9 REGENT STREET, SWINDON
Telephone 2415



Also at
4 WINGATE PARADE, SWINDON

We are your MAIN DEALER for
VAUXHALL and JAGUAR cars
BEDFORD Vans and Trucks
Etc.

Any make of Car or Truck
supplied - Used Vehicles a
specialised part of our
business.



SKURRAY'S
SWINDON

Telephone: 2266

STRANGE'S GARAGE

Austin Dealers in Cars and Light Vans
Agents for Vespa Scooters
Second-hand Cars Bought and Sold

WOOTTON BASSETT

Telephone 216

Swindon Bacon Curing Co. Ltd.

*Specialists in
Bacon, Pork & Cooked Ham*

50 FLEET STREET
SWINDON

Telephone: 2122

WARNES (Swindon) Ltd.

ELECTRICAL CONTRACTORS
RADIO AND TELEVISION

Contractors to:
SWINDON TOWN FOOTBALL CLUB

51/52 COMMERCIAL RD., SWINDON
'Phone 6486/6694

160 COUNTY RD., SWINDON
'Phone 6346/7

9 SWINDON ST., HIGHWORTH
'Phone 379

HALF-DAY EXCURSION
BOOKINGS
Every Wednesday
to
LONDON
12/3

from SWINDON JUNCTION
Depart 2.32 p.m. and 4.5 p.m.
(Refreshment Car Trains)
Return from Paddington 6.35, 8.5,
8.55, 9.25, 10.30, 11.50 p.m. the
same day, or 1.0 (night).

BRITISH RAILWAYS

Western Region

MILLS & MER

H
O
U
S
E
F
U
R
N
I
S
H
E
R
S

SWINDON TOWN v. GRIMSBY TOWN
SWINDON

RIGHT WING

Colours: RED SHIRTS,
Burton

Jones, K. (2)

Morgan (4)

Owen

Corbett (7) Hunt (8) Summerbee (9)

Referee:

Mr. R. H. Mann
(Worcester)



Scott (11) Hunt (10) Rafferty (9)
Cockerill (6) Jobling
Keeble (3)

White

GRIMSBY TOWN

LEFT WING

These teams are subject

16-17 BRIDGE ST. S

W. B. CARTER

Newsagent, Tobacconist and Confectioner

Large selection of Boxes of Chocolates
always in stock

CORONA, TIZER, DRINKS, Etc.

Agents for Wall's Ice Cream

188/190 FERNDAL RD., SWINDON

Telephone: 3089

Blunsdon Abbey Caravans Ltd.

N.C.C. Approved Trader

TRY CONSULTING US
FOR
SALE, SITES & SERVICE

A Home of your own in a few years
and no Landlord

Tel. Blunsdon 281
For Our Information Service

"Keep that Team spirit"
**JOINT TERRITORIAL
 THE ARMY**

Units in WILTSHIRE
 still need recruits

Apply for details by letter or by
 phone or in person at your local
 Drill Hall

**THE PLESSEY COMPANY
 Ltd.**

After years of achievement have great
 expansion plans for the future.

**TECHNICAL STAFF
 CLERICAL STAFF
 MANUAL WORKERS**

are essential for this progress.

Interested persons please apply to the
 Personnel Department.

HERRICKS LTD.

U
P
H
O
L
S
T
E
R
E
R
S
•
R
E
M
O
V
A
L
S

BY TOWN Kick-off 3 p.m.

WINDON TOWN LEFT WING
 RED SHIRTS, WHITE SHORTS
 Burton

Trollope (3)
 Owen (5) Bell (6)
 Berbee (9) Woodruff (10) Jones, F. (11)

Linesmen:

Red Flag—
 Mr. H. N. Lye
 (Weston-super-Mare)

Yellow Flag—
 Mr. R. L. J. Hamblin
 (Cheltenham)

Herty (9) Cullen (8) Williams (7)
 Jobling Welbourne (4)
 Donovan (2)

White
 MSBY TOWN RIGHT WING
 are subject to alteration

ST. SWINDON PHONE 5365

INSIST ON
**Garrard
 EQUIPMENT**



For Superb Tape and Record Playing



Fitted by the World's leading
 manufacturers.

Haskins Garage

Sales : WROUGHTON : Service
 263

AUSTIN MORRIS
 LAND ROVER ROVER

SWINDON'S NEW SNACK
 AND GRILL BAR

HARLEQUIN

90 VICTORIA ROAD, SWINDON

Open Daily 8.30 a.m. - 9.0 p.m.

The Best Draw Home or Away!

"DO IT YOURSELF"

**BAYNES (SWINDON)
 TIMBER Co. Ltd.**

County Works, County Road, Swindon
 Tel. 4112/3

"THE PERFECT CENTRE"

for all "do-it-yourself" enthusiasts.
 Call, write, phone your requirements:
 Hardwoods, softwoods, moulding, ply-
 wood, Formica and Perstorp, etc., all
 cut to your given sizes.

"IF WE HAVEN'T GOT IT — WE'LL GET IT!"

Comprehensive catalogue sent on request

One minute from the Ground

ONE QUALITY ONLY -- THE BEST!

FRESH SUPPLIES DAILY

York Road Fisheries

SWINDON

WET, DRY or FRIED Tel.: 3680

DEMPSTER ENTERPRISES, offer a modern fleet of 4 and 6 seater self-drive hire cars, for your pleasure and convenience. For advance bookings apply:-

Dempster Enterprises

4 MILTON ROAD, SWINDON
Tel. 6603

Rent your T.V. - Washing Machines
Spin Dryers - Electrical Installations
from:

D. V. HOLLAMBY LTD.

138 High St., Wootton Bassett, Wilts.
Telephone 295

ALL LEADING MAKES IN STOCK

Howard Autos, Swindon's Main Cotton Motor Cycle distributors always have a good selection of guaranteed used cars for you to choose from.

HOWARD AUTOS

3 WELLINGTON ST., SWINDON

Tel. 6603

STAND TICKETS

Tickets for seats in the Old and New Stands may be booked in advance. Postal applications should be accompanied by a remittance and stamped addressed envelope. Tickets ordered by telephone must be collected not later than 12 noon on the day of the match, otherwise they will not be reserved.

Prices for League Matches:—

New Stand—Block C—6/- (Centre)

Blocks B and D—5/- (Side Stands)

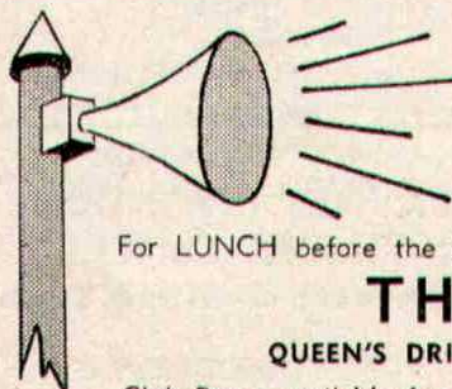
Blocks A and E—3/6 (Wing Stands)

Old Stand—Centre Box—7/6

Block H—5/- (Centre)

Blocks F, G and I—3/6 (Side Stands)

Postal applications to—Secretary, Swindon Town F.C., County Ground, Swindon, Wilts. Telephone Swindon 2118.



**A SPECIAL
MESSAGE**

For LUNCH before the match—or a SNACK afterwards, visit

THE BULLDOG

QUEEN'S DRIVE, WALCOT ESTATE — Tel. 6877

Club Room available for meetings, private parties, wedding receptions, etc.

A SIMONDS TAVERN

Supporters' Club

Notes

In spite of disappointments on Good Friday and Easter Saturday, when we had heard news of early leads, only to be disillusioned later, all supporters were satisfied with the result on Easter Monday, when the team, weakened by injury, gained a win against Queen's Park Rangers.

We hope that this will be repeated today, and that fears of relegation will be alleviated.

It seems possible, from early announcements, that there may be reorganisations of fixtures next season.

The proposal to play the first round of the League Cup on the first two Saturdays of the season does not meet with the approval of football enthusiasts generally, either in Swindon or elsewhere.

This particular competition has not aroused the interest which was anticipated, and football followers would not derive nearly as much enjoyment or excitement from such matches, as from the opening matches of the Football League programme.

Another aspect, which had not previously been mentioned, was put forward last Monday by a Queen's Park Rangers' supporter, who said that having paid for a season ticket for the League programme, he certainly would not pay for a seat for a Cup match,

before having seen a single League game.

Then there are proposals to play League fixtures on Friday evenings. Such measures would considerably reduce the number of outings to "away matches".

Coventry City have announced a financial gain by changing from Saturday afternoons to Friday evenings, but most of these matches have been played since the weather began to improve and not during the months of November, December and January.

At any rate, it appears that Swindon's Reserve matches will be played in midweek next season. Mention of the Reserve side leads us to pay tribute to some of the senior professionals, in particular Richardson, Higgins, Tilley and Marshall, who have played conscientiously. The four players mentioned have given of their best. Richardson must be regarded as particularly unfortunate never to have appeared in the first team.

A few seasons ago we took pleasure in these notes to recommend more supporters to attend the Reserve matches, and we hope that there may be some improvement next season, so that we may be able to make similar recommendations.

Holders of "Lucky Programmes" on April 3rd were: 90, Mr. Chinn, 197 Penhill Drive, Swindon. 365, Mr. Millard, 154 Beech Avenue, Swindon.

KEY OF THE BOARD

Half-time scores will be given in two sections. First Section indicated by **|1|**. Second Section indicated by **|2|**.

FIRST SECTION

- A—Arsenal v. Blackpool
- B—Birmingham v. Tottenham H.
- C—Burnley v. Bolton
- D—Manchester C. v. Chelsea
- E—Newcastle v. Everton
- F—Nottingham F. v. West Ham
- G—Preston N.E. v. Wolverhampton
- H—Sheffield W. v. Leicester
- I—West Brom A. v. Manchester U.
- J—Bristol R. v. Norwich
- K—Derby v. Plymouth
- L—Ipswich v. Portsmouth
- M—Leeds v. Swansea
- N—Middlesbrough v. Luton
- O—Rotherham v. Sheffield U.
- P—Southampton v. Stoke
- Q—Bury v. Bournemouth
- R—Halifax v. Bristol C.
- S—Shrewsbury v. Q.P.R.
- T—Torquay v. Colchester

SECOND SECTION

- A—Walsall v. Notts C.
- B—Watford v. Reading
- C—Accrington v. Exeter
- D—Aldershot v. Hartlepool
- E—Bradford v. Carlisle
- F—Chester v. Darlington
- G—Crewe v. Southport
- H—Gillingham v. Rochdale
- I—Northampton v. Wrexham
- J—Oldham v. Doncaster
- K—Workington v. Crystal P.
- L—York v. Peterborough

Typewriters
from £10

FULLY GUARANTEED

**DOBELL SHEARMAN
& CO. LTD.**

26 HIGH ST. & 33 FARINGDON RD.,
SWINDON Telephone 2312

Only 800 yards to your Dream Car —
NEW ALPHA MOTOR Co.
(SWINDON) LTD.

QUEENS DRIVE, SWINDON

Tel. 5062/63

For Top Quality Used Cars at the
Lowest Prices

Open 7 days per week from 7 a.m. to 10.30 p.m.

DIVISION III

	P.	W.	D.	L.	F.	A.	Pts.
Bury	40	26	6	8	99	44	58
Walsall	41	24	5	12	87	55	53
Queen's Park Rangers	40	22	9	9	77	49	53
Grimsby Town	39	18	10	11	69	56	46
Notts County	41	18	9	14	73	71	45
Port Vale	41	16	12	13	90	73	44
Torquay United	40	14	16	10	69	63	44
Watford	40	16	11	13	69	66	43
Barnsley	37	18	6	13	71	66	42
Newport County	40	16	10	14	75	77	42
Hull City	39	16	8	15	66	63	40
Halifax Town	39	12	16	11	62	67	40
Coventry City	39	14	11	14	71	65	39
Bristol City	41	15	9	17	62	63	39
Shrewsbury Town	38	12	14	12	65	63	38
Brentford	40	12	14	12	50	58	38
Bournemouth	41	14	8	19	53	68	36
Reading	39	11	11	17	57	74	33
Southend Utd.	41	11	11	19	52	70	33
Tranmere Rovers	41	13	7	21	73	107	33
SWINDON TOWN	39	10	12	17	52	52	32
Bradford City	40	10	12	18	57	75	32
Chesterfield	41	9	10	22	56	76	28
Colchester	41	9	9	23	57	91	27

Chappell's Funeral Service

(Fun. Dir. 1 A. A. Winchcombe)

196 COUNTY ROAD
SWINDON

24-hour Service

Tel. 6073

*Don't buy a Car, Motor Cycle or Scooter
until you have seen the wide selection we
have to offer at*

CORONATION CAR SALES

67/68 VICTORIA ROAD

Telephone: 6106

**SEA VIEW HOLIDAY
CAMP**

YOUR HOST—Mr. BENNETT



**WYKE REGIS - WEYMOUTH
Dorset**

"COAL!"
"COAL!"
"COAL!"

J. WILMER

ST. MARGARET'S ROAD, SWINDON

Telephone 22535

MEET YOUR FRIENDS AT THE

Southbrook Inn

(Hosts: Mr. and Mrs. Jack Scutts)

FULLY LICENSED
CLINCH BEERS, ETC.

SOUTHBROOK STREET, SWINDON
Tel.: 5837

STOP ! LOOK !

NU-HOMES

For all Household Fitments

Paints - Emulsions - Wallpapers
Kitchen Units and Bathroom Suites,
etc.

176a Manchester Road

TELEPHONE 2178

FORTHCOMING MATCH . . .

DIVISION III

SWINDON T. v. HULL CITY

WEDNESDAY NEXT, APRIL 12th, 1961

Kick-off 7.30 p.m.

**TO ALL LOCAL SPORTS
CLUBS**



It is quicker and cheaper
to WASH and DRY your
Football Clothes at

The Launderettes

at

59 WELLINGTON STREET

or

**186 VICTORIA ROAD
SWINDON**

*For High Class
Central Heating, Plumbing
Painting and Decorating
Electrical Installations
and Repairs*



NORTH WILTS

**Sanitary & Heating
Co. Ltd.**

NEWPORT ST., SWINDON

'Phone: 4201

Always at your service

L. BIBBY

For all Types, Rags, Iron and Metal,
etc. Spot Cash Paid. Please Telephone
2101 and our van will call.
THE PADDOCK, ERMIN STREET
STRATTON ST. MARGARET

Walcot Greengrocer

G. E. STAMMERS

✽

**1 SUSSEX SQUARE
SWINDON**

SWINDON **2526**

CAN ALSO BE YOUR LUCKY NUMBER ! ! !

if you ring

HOLMES & LUCAS

14A REGENT STREET : : SWINDON

for all your

TELEVISION, RADIO AND ELECTRICAL REQUIREMENTS

LUCKY PROGRAMME

Please retain your programme. An announcement will be made at half-time of two numbers and the holders will be given a stand seat at the next Division III game. The persons who purchased the programmes bearing the winning numbers should call at the office after the game and claim their seats.

7948

FRIED FISH AND CHIPS

Always Fresh - Always Hot

WALCOT FISHERIES
Sussex Square

Wet fish and frozen foods all refrigerated display.

HATTON'S NEWSAGENCY
A. J. D. WOODHOUSE & A. SMITH
Newsagents : Confectioners
Agents for Wessex School of Motoring
Main Booking Agents for Millers Coaches
BOOK YOUR COACH FOR PRIVATE PARTIES
OR FOR YOUR FOOTBALL OUTINGS
6 REGENT CIRCUS (NEAR G.P.O.)
Telephone Swindon 2731

For Insurance or Hire Purchase
CARS - CARAVANS - MOTOR CYCLES, etc.
Consult

D. & H. HENTY LTD.
54 COMMERCIAL RD., SWINDON
SWINDON 5258

PANKHURST
The Palace, Gorse Hill,
Swindon.

MOTOR CYCLE - SCOOTER AND
THREE-WHEELER SPECIALISTS

Open Mon. to Sat. 9 a.m. - 8 p.m. Phone 5466

To be well shod—
is to be well dressed

Victoria Shoe Repairs
129 VICTORIA ROAD, SWINDON

First class materials and workmanship

Maylott Studios

For GROUP & SPORT Photographs
OFFICIAL PHOTOGRAPHER TO
SWINDON TOWN FOOTBALL CLUB

31 FARINGDON RD. Tel. 2792